

# Transforming complex data streams into simple emissions decisions.



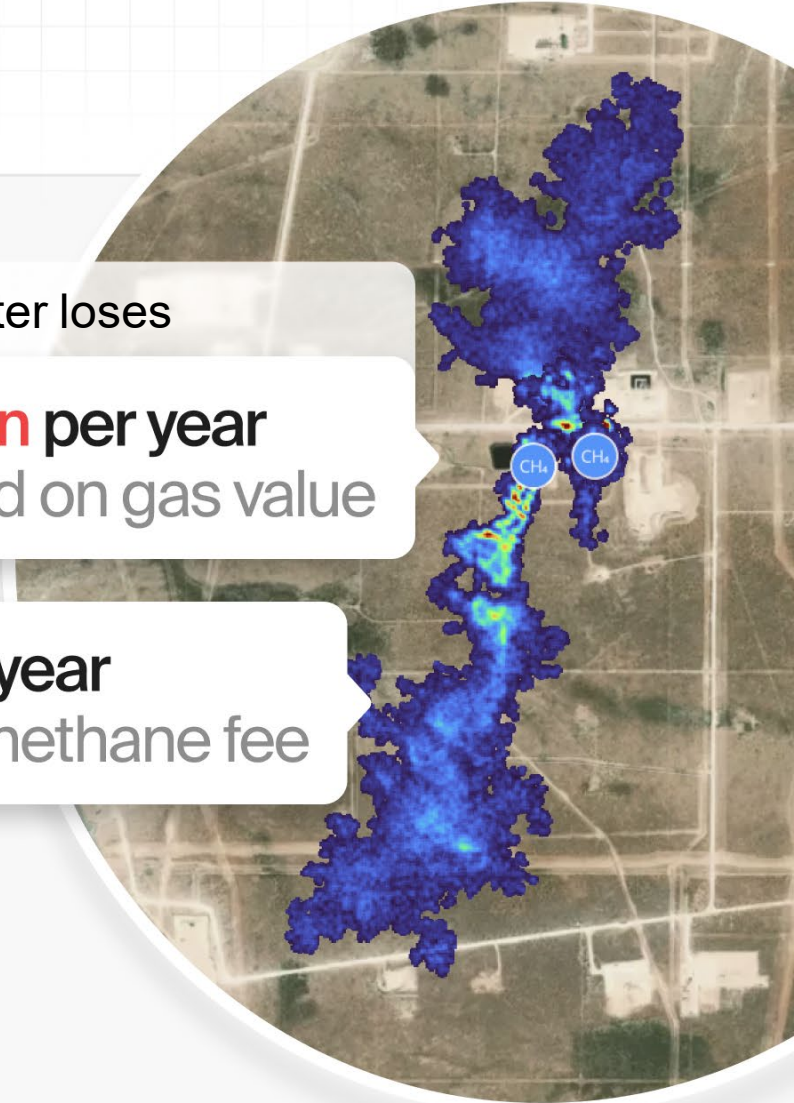
# Bad emissions data will cost you **millions**

Lost product revenue and taxation introduce **financial risk**

A typical super-emitter loses

**\$1.5** Million per year  
Based on gas value

**\$13** Million per year  
Based on methane fee



# The Problem

The image displays a collage of various software interfaces, illustrating a complex data ecosystem. The central focus is on data integration and analysis. Several Microsoft Excel spreadsheets are visible, showing columns for 'Order date', 'Region', 'Rep', 'Item', 'Units', 'Unit cost', and 'Total'. One spreadsheet shows a table with data for various regions and representatives, such as 'Central', 'East', and 'West'. Another spreadsheet shows a table with columns for 'Region', 'Rep', 'Item', 'Units', 'Unit Cost', and 'Total', with a bar chart titled 'Supplies' overlaid on it. A dashboard shows 'Actual revenue' at 350,000 and 'Annual goal' at \$1.2M. A 'Forecasted revenue by quarter' bar chart shows revenue for Q1 2022, Q2 2022, Q3 2022, and Q4 2022. A project management tool shows a Gantt chart with tasks like 'Task 1', 'Task 2', 'Task 3', and 'Subtask 1'. A table lists accounts and their revenue, such as 'Flo's Cafe' with \$120,000 and 'Bubba Gump' with \$60,000. A table lists files and their stages, such as 'Crystal Codebase' with 'Proposal/Price Quot' and 'Harry Helpsalot' with 'Closed Won'. A table lists tasks and their owners, such as 'Task 1' with 'Roger Reports' and 'Task 2' with 'Beth Bigidea'. A table lists subtasks and their owners, such as 'Subtask 1' with 'Roger Reports' and 'Subtask 2' with 'Roger Reports'. Green arrows indicate data flow and relationships between these different systems.

Our solution

# Understand. Reduce. Optimize.

Integrate diverse emissions data streams for clarity and decision support

## Accurate Inventory



Save time with streamlined data management

## Better Data Integrity



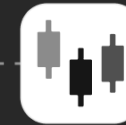
Increase operational insight with quality data

## Reconcile Estimates



Comply with complex reporting standards

## Plan and Forecast



Prioritize abatement projects by \$/CO<sub>2</sub>e



# Emissions Insights

## Build accurate and flexible inventories

Save time and reduce risk with streamlined and reliable management of emissions data and calculations.



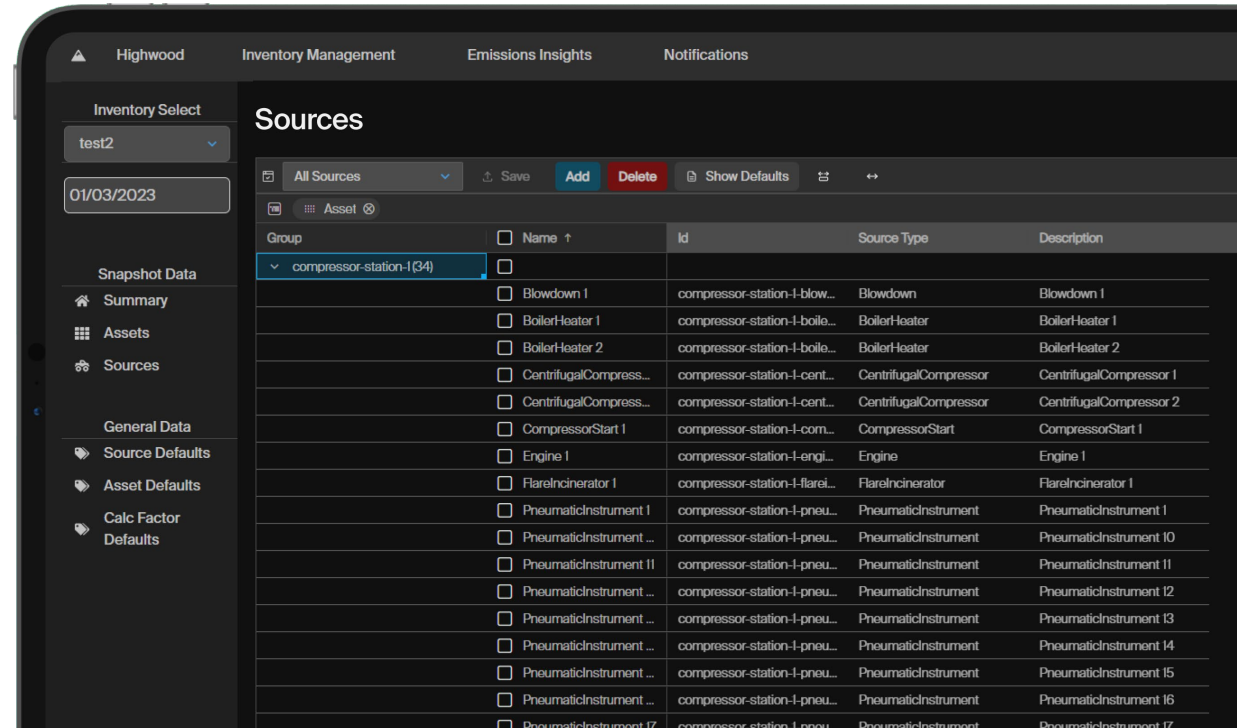
Track and manage inventories by site, business unit, region, or country



Establish baselines and targets to track improvement over time



Easily compare, modify, and merge inventories as requirements evolve





# Reduction Pathways

## Optimize your roadmap

Our world-class forecasting software is unlike anything else available to the energy industry.



Identify abatement projects that apply to your specific equipment and sites



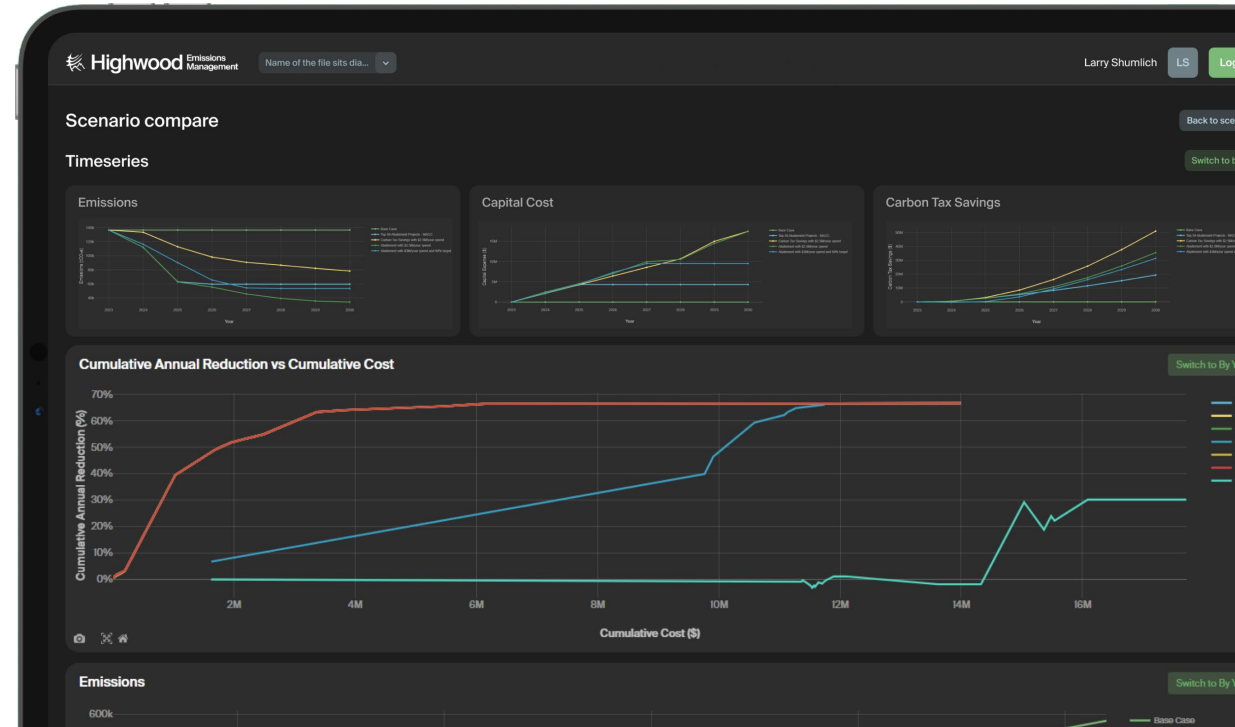
Custom MACC development with robust economic and technology modeling

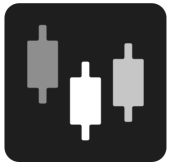


Iterative scenario optimization with instant analysis as situations change



Deliver clear plans to reach any target to build confidence in key stakeholders





# LDAR Sim

## Choose the right LDAR technologies for you

Simulate 200+ methane detection and quantification solutions to optimize emission, economics, and safety.



**Cost-effective strategies** that use the best technologies and work practices



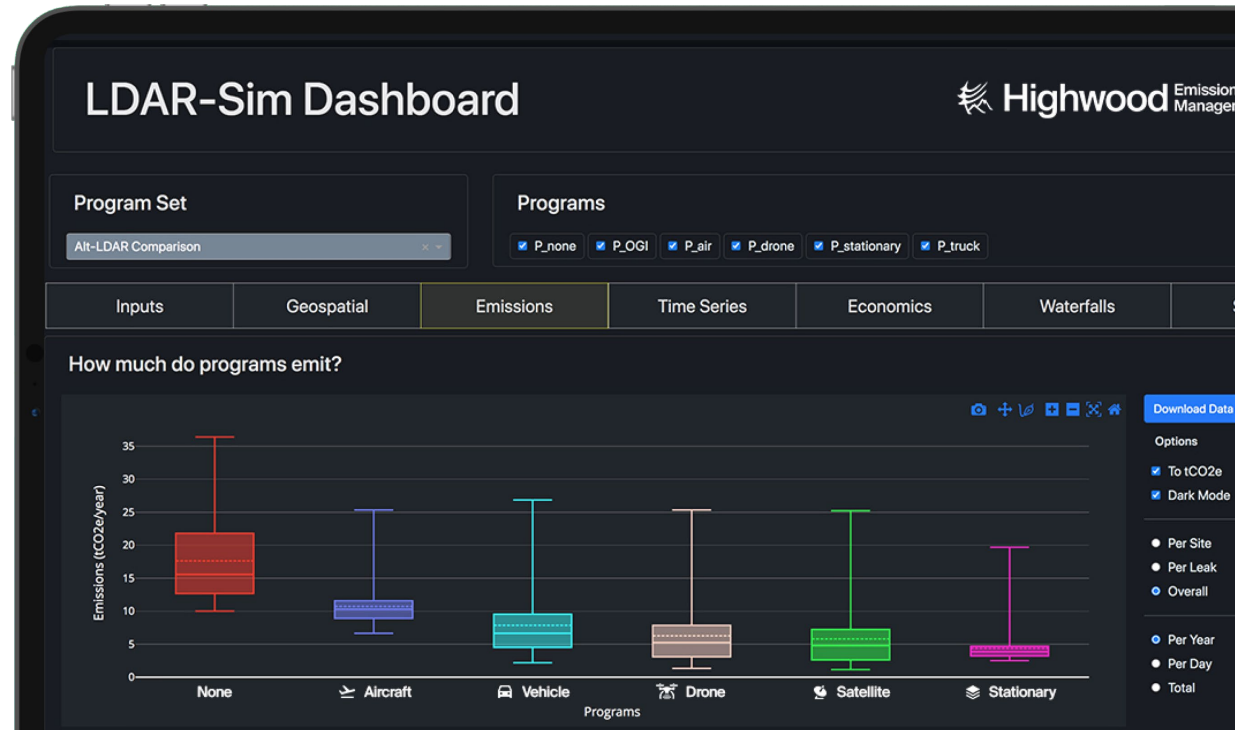
**Safety modeling** to reduce on-site and highway exposure



**Alignment among OGMP 2.0, MiQ, and regulations** to reduce inefficiency



**Equivalency modeling** for regulations and gas certification



# Emissions Insights Steering Committee

Join a curated group of 3-5 leading operators to collaboratively develop a holistic methane measurement and reconciliation software.



Save millions on internal R&D costs and leverage Highwood's domain expertise



Transform existing data and technology pilots into value creating emissions strategies



Strengthen global reporting transparency and stakeholder communication



# Save \$



**Inventory setup**  
40 hours vs. 3 months



**Reduce cost of mitigation up to 40%**

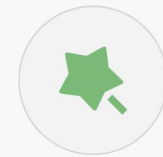


**Reduce or eliminate methane fee, saving millions**

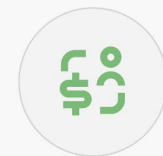
# Make \$



**Increase detection technology ROI by up to 20%**



**Pave the way for RSG & other low emissions products**



**Create & trade new methane-based carbon credits**

Why Highwood?

# Shaping the future of emissions management with rigor, transparency and collaboration.

Executed 100+ emissions consulting projects

Trusted by domestic and international regulatory bodies

Deep O&G expertise across the value chain

Backed by leading stakeholders across the emissions ecosystem



COLORADO  
Department of Public  
Health & Environment



QUBE



Environment and  
Climate Change Canada  
Environnement et  
Changement climatique Canada



COLORADO  
STATE  
UNIVERSITY



Stanford  
University



TEXAS  
The University of Texas at Austin



KUVA  
GAS CLOUD IMAGING



UNIVERSITY OF  
CALGARY



KAIROS AEROSPACE



PTAC  
PETROLEUM  
TECHNOLOGY  
ALLIANCE  
CANADA



COLORADO  
OIL & GAS  
ASSOCIATION



EDF  
ENVIRONMENTAL  
DEFENSE FUND  
Finding the ways that work



GTI ENERGY  
solutions that transform



SeekOps



CLEAN AIR  
TASK FORCE



# Thank you

[Molly@highwoodemissions.com](mailto:Molly@highwoodemissions.com)

[Thomas@highwoodemissions.com](mailto:Thomas@highwoodemissions.com)

[Jessica@highwoodemissions.com](mailto:Jessica@highwoodemissions.com)