



The KPP400 Pipe puller from KOBUS®



Tom Atienza
Operations Director
March 21st 2019

What is the Pipe Puller

It is an excavator attachment device, designed to pull Gas and Water services out of the ground, replacing for new in a swift operation.



Advantages

- **CHEAP**: Minimum excavation required means minimum reinstatement costs.
- **QUICK**: Average pulling speed is 10-20 ft. per minute.
- **CONVENIENT**: Its versatility allows the excavator to be positioned almost anywhere, not requiring road closures.
- **SAFE**: Everything happens and is contained within the KPP400. No flying snapped cables, no flying debris, no utility strikes, no adjacent utilities damage, no crew in the vicinity.

What can it pull?

- **Materials:** Steel, Lead, Copper, Rod iron and plastic (HDPE or similar)
- **Diameters:** up to 1.25"
- **Lengths:** 85 to 100' depending on diameter.

What can it draw in?

- **Materials:** Copper or HDPE (or similar)
- **Diameters:** up to 2"
- **Lengths:** 85 to 100', same as pulled service.

Preparation

- Dig a pit of safe and sufficient dimensions to depth. Use shoring when required.
- The KPP400 only requires a 2x2 ft. pit to operate at the pulling pit and as small as practicable at the inserting pit.



Preparation

- Cut the service and fit the required expander, which creates a bore hole for the new pipe. Different available expanders offer all possibilities of replaced pipe vs new pipe.
- Available sizes:
 - $\frac{3}{4}$ " to $\frac{3}{4}$ "
 - $\frac{3}{4}$ " to 1"
 - 1" to 1"
 - 1" to 2"

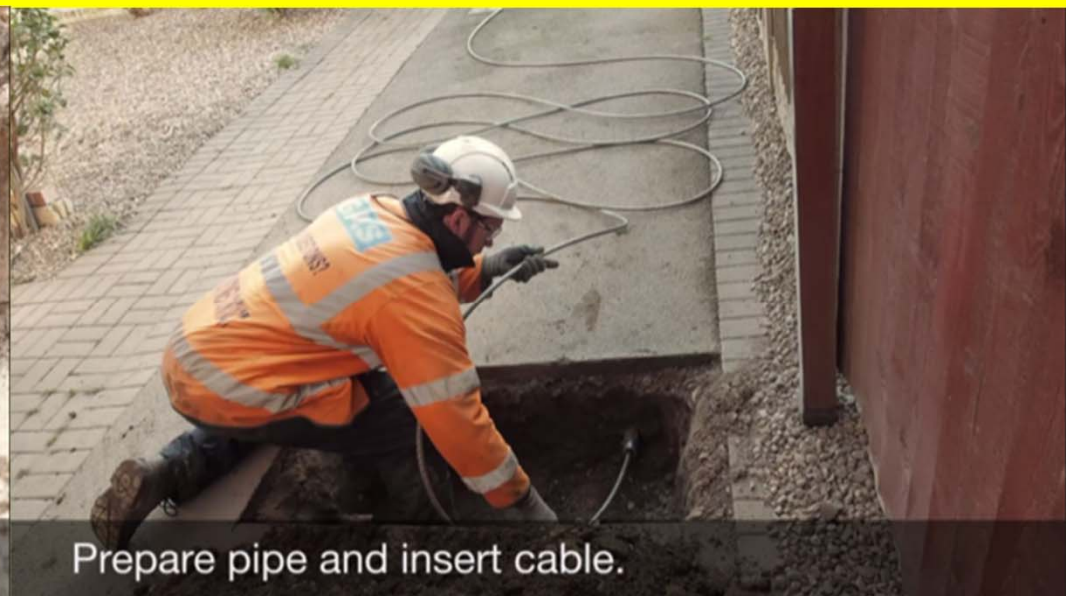


Preparation

- Feed pulling cable through pipe. Different pulling cables offer different possibilities (gas and water services)
- Available sizes (and any length to suit requirements).
 - 14mm (9/16"): For steel services, with MBL of 60,000 lb
 - 10mm (3/8"): For Copper, Lead and Plastic services, with MBL of 25,000 lb
 - 8mm (5/16"): For lead services of reduced diameters (1/2" and 5/8") with MBL of 15,000 lb



Prepare pipe and insert cable.



Prepare pipe and insert cable.

Preparation

- Push cable all the way trough old pipe until it reaches Pulling Pit.
- Attach new service (Copper or Plastic) to cable's back ferrule using the Kobus accessories.



Excavators

- As small as a 2Tn (5,000lb) is used in UK.
- USA and Canada prefers 35-45 size.
- We adapt to each customer need.



Flexibility and adaptability beyond belief.

- Patented 360° rotating head, allows for the excavator to be positioned almost anywhere.
- No need to stop traffic or set up traffic light systems or even close the road partially.



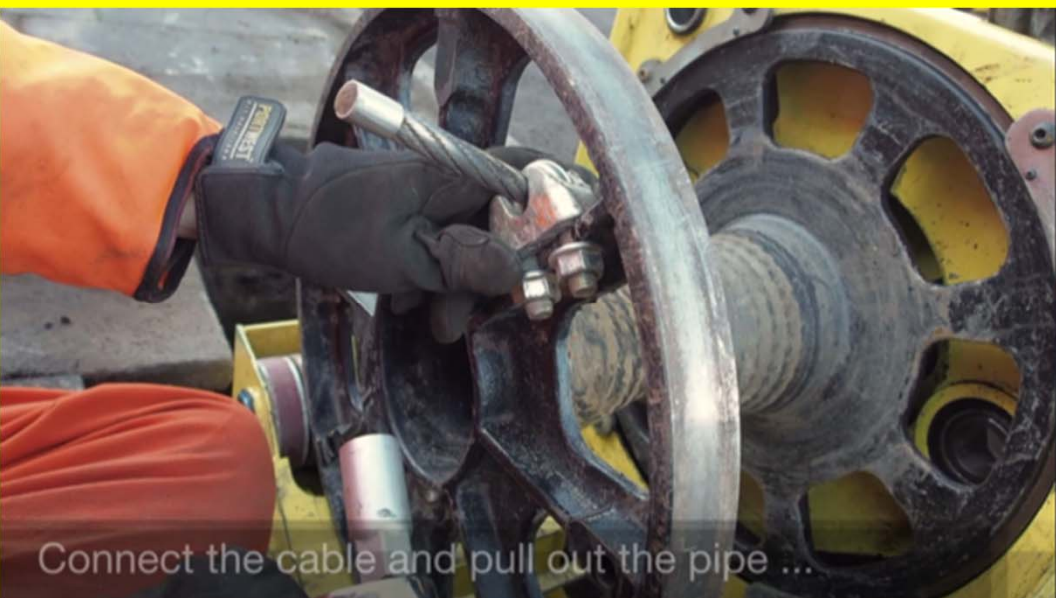
Quick positioning.

- Lower machine into pulling pit and align with Pipe to be replaced.



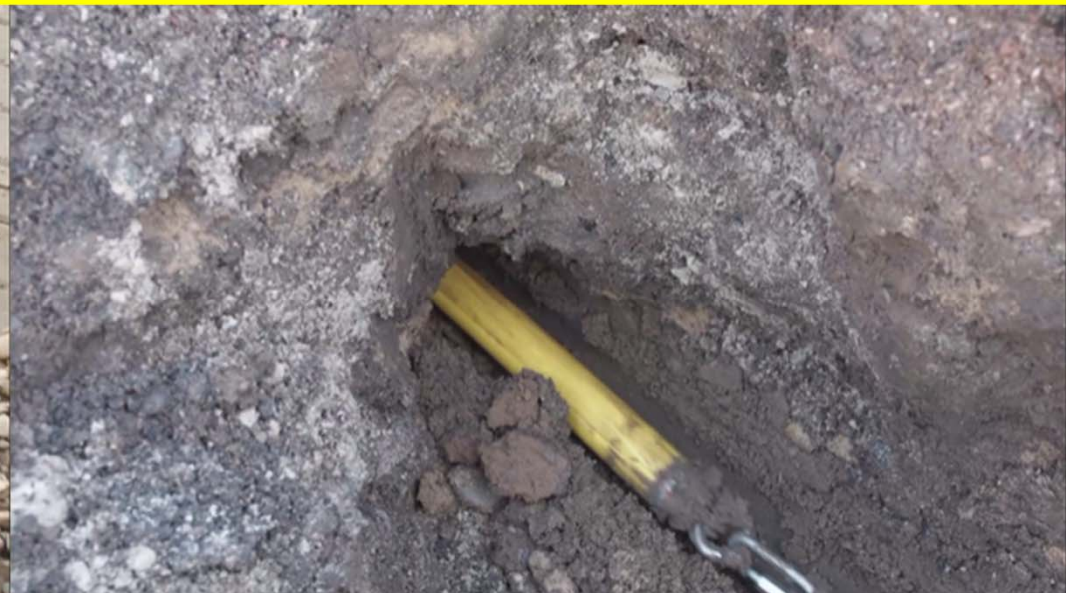
Quick assembly.

- Feed your cable through the KPP400, feed onto Spool, secure with U-bolt and start pulling.



Simple, yet smart and powerful.

- Patented cable construction and fittings, designed for quick connection and release, ensure you spend less time on the job.
- Pull through the meter pit too with just one cable.



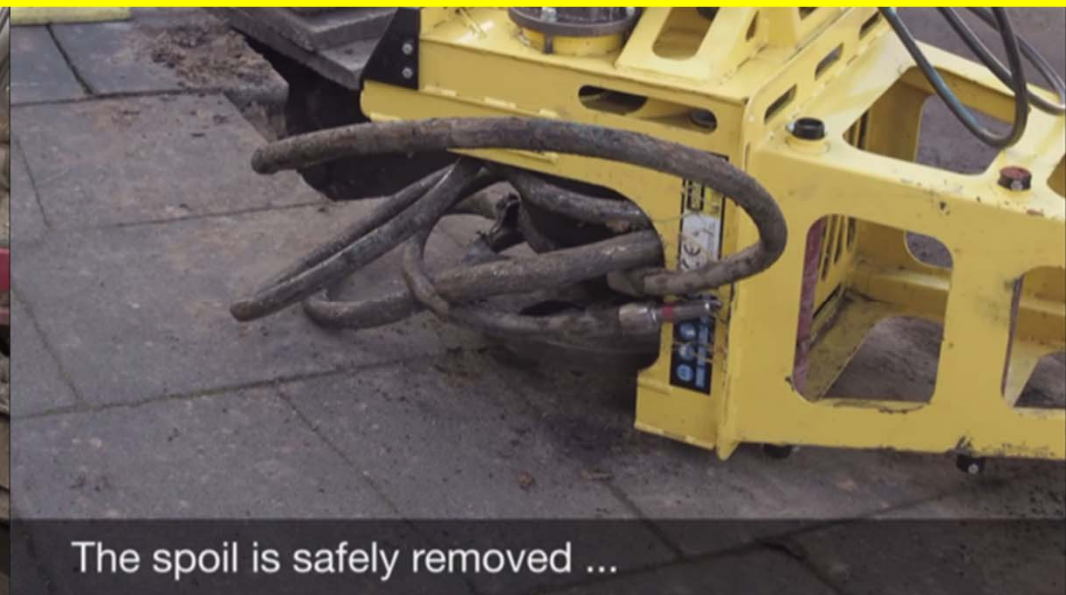
Quick Completion

- With speed up to 20ft a minute, the old service will be out in no time and of course, your new one in place too.
- Pull until the new service reaches the top of the puller, then cut and cap the pipe and remove the machine from the pit.



Quick turn around

- Lower the KPP400, reverse the rotation and the old pipe will loosen the tension, disengaging the patented 2 piece spool safely.



Quick turn around

- Move the machine away and simply pull the male spool out of the coiled removed service.
- Screw back on the KPP400 and you all set.



KOBUS[®]

The logo features the word "KOBUS" in a bold, yellow, sans-serif font. A registered trademark symbol (®) is positioned at the top right of the letter "S". Below the text is a thick, horizontal yellow bar. The entire logo is set against a black rectangular background, which is itself centered on a larger yellow background.

... the proof is in the pulling ...