



## What is D-Gen™ PRO?

*D-Gen™ PRO* is the premier tool for economic analysis of distributed power generation. *D-Gen™ PRO* quickly and easily evaluates the cost-effective application of on-site and distributed power generation. It is an excellent tool for corporate facility managers, gas and electric utility representatives, energy service companies, and distributed power generation equipment manufacturers.

## Benefits of D-Gen™ PRO

- Quickly performs economic analysis: life cycle cost savings, payback, internal rate of return, average cost of on-site generated kWh, monthly utility costs.
- Adaptive to your unique analysis needs: define custom rate structures, define custom generators (microturbines, reciprocating engines, gas turbines) and their associated costs, create custom load shapes, import actual load shapes, import actual billing data.

**View annual results**

**Annual grid electricity use and costs**

	Total Use kWh/yr	Peak Use kW	Total Cost \$/year	Average Cost \$/kWh
Baseline:	22,390,500	3,645.0	\$2,211,435	\$0.099
With Generators:	21,208,950	3,627.9	\$2,112,145	\$0.130
Savings:	1,185,526	117.1	\$99,290	-\$0.021

**Annual gas use and costs**

	Total Use MMBtu/yr	Peak Use MMBtu/day	Total Cost \$/year	Average Cost \$/MMBtu
Baseline:	75,782	291	\$33,046	\$0.436
With Generators:	88,852	329	\$37,603	\$0.425
Savings:	-12,770	-38	-\$4,557	\$0.011

**Economics**

Total generator installation cost:	\$5,529,446
Payback (based on 1st year savings):	70.0 years
Life cycle savings:	-\$3,580,548
Internal rate of return:	0.1%

For information about definitions and calculation assumptions, press F1

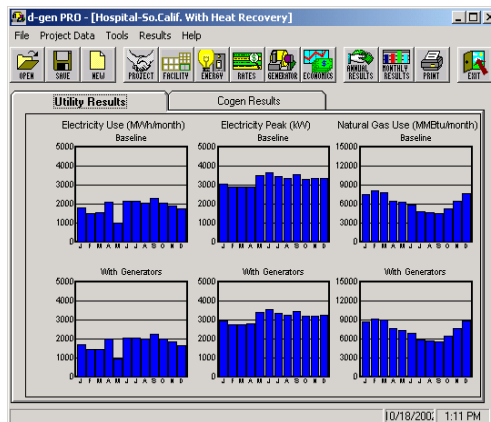
10/18/2007 1:12 PM

## Features

- Easy-to-use "Wizard-like" capabilities:
- A **rate tool** allows for accurate economic assessments using complex rate structures and maintains a library of your customers' rate information.
- A **load shape tool** creates new or edits existing hourly load profiles
- A **generator tool** maintains a library of equipment performance data.
- Import monthly or hourly billing data or manually input actual billing information.
- Produce easy-to-understand sales and marketing reports and graphs on the economic feasibility of on-site and cogeneration, including waste heat analysis.
- Use climate data from over 700 locations or create new climate locations.
- Windows® /XP/Vista/7 graphical user interface.

## Potential Users

- Power generation consultants, equipment marketers, system designers and operators
- Facility managers
- Gas and electric utility marketers
- ESCO engineers and marketers
- Energy marketers



## Version 3.0 Enhancements

*D-Gen™ PRO* Version 3.0 consist of improved features such as: user guidance tool for first-time users, improved on-site generation modeling capabilities (weekend operation, part-load efficiency, thermal recovery, automatic generator deployment), enhanced rate-handling capability, improved information output-summary graphs and tables, results tool for custom reports, SI units now available.

## Easy to Use



Enter General Project Information



Define Generator: pick pre-defined generator from library, use generator tool to define new generator



Enter Facility Information



Enter Economic Assumptions



Enter Data: use load shape tool to create energy profile, use pre-defined load shape from library import file, input energy profile from actual billing data for custom load shape



*D-Gen™ PRO* calculates performance



Input utility rates: pick pre-defined rate from library, use rate tool to create new rate

### User can:

View Results, Save Results, Print Results and also Export Results into presentation software